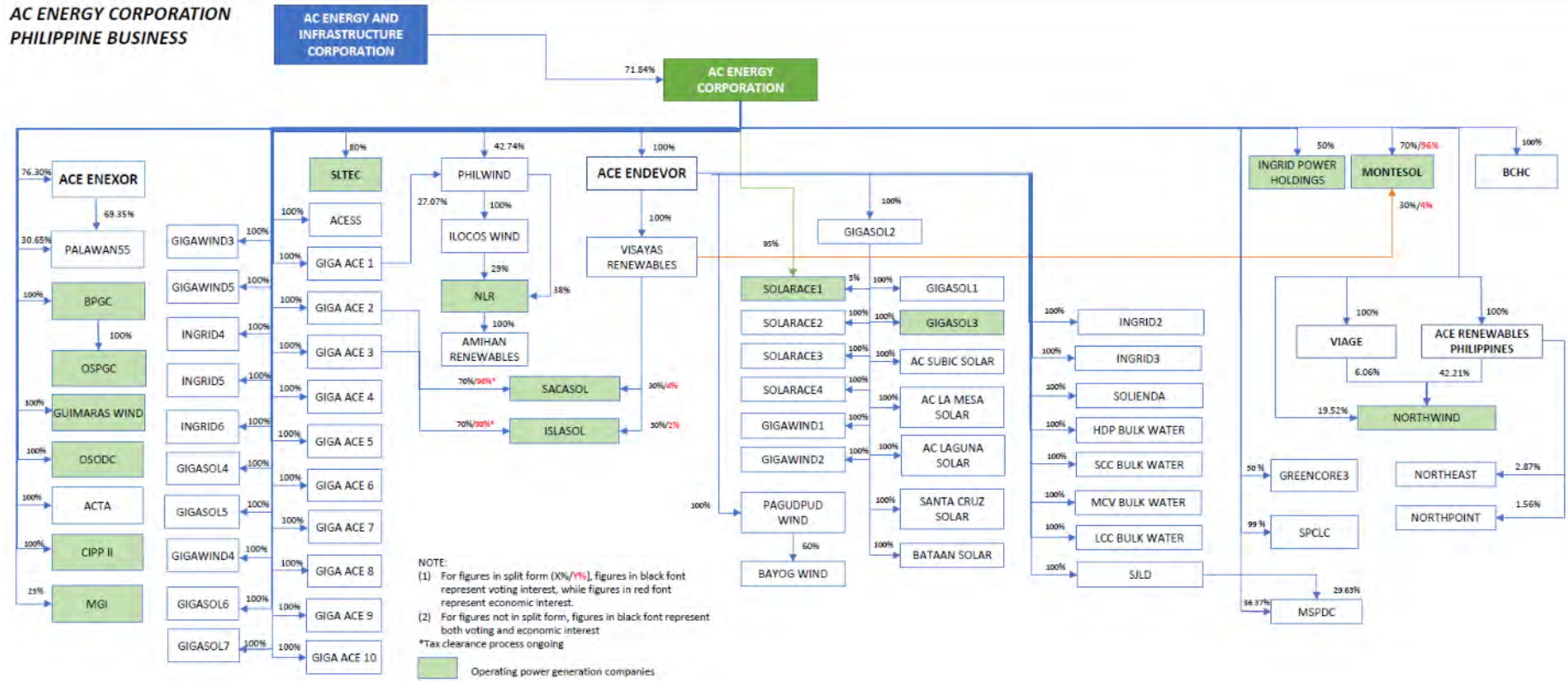
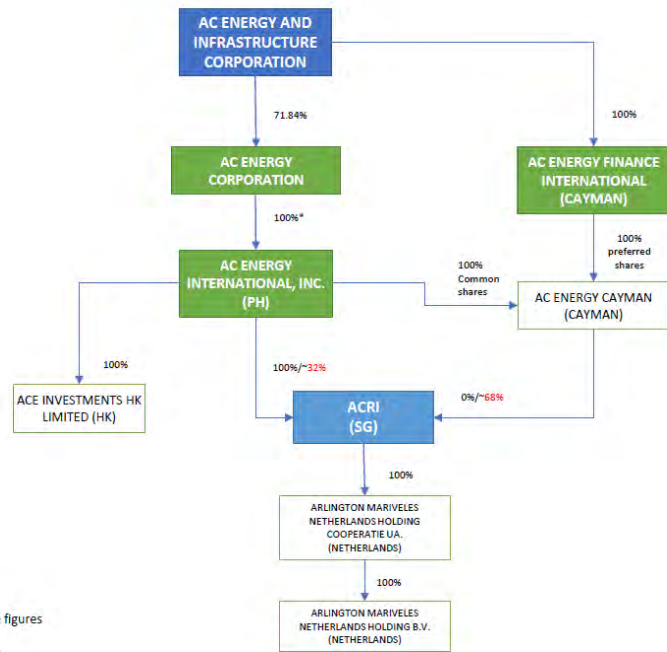


CORPORATE STRUCTURE

The following chart illustrates the Company's material shareholders and Subsidiaries as of the date of 30 June 2021.



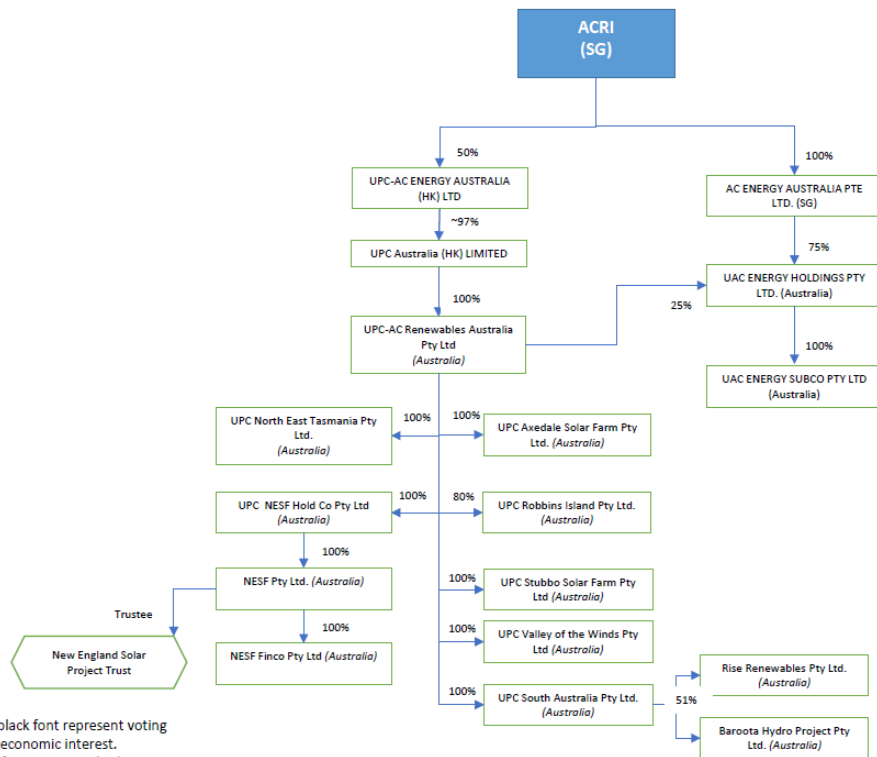
**AC ENERGY CORPORATION
INTERNATIONAL BUSINESS**



Note:
 (1) For figures in split form (X%/Y%), figures in black font represent voting interest, while figures in red font represent economic interest.
 (2) For figures not in split form, figures in black font represent both voting and economic interest
 * The Certificate Authorizing Registration for the transfer to AC Energy Corporation of the shares in AC Energy International, Inc. is currently being processed with the Bureau of Internal Revenue

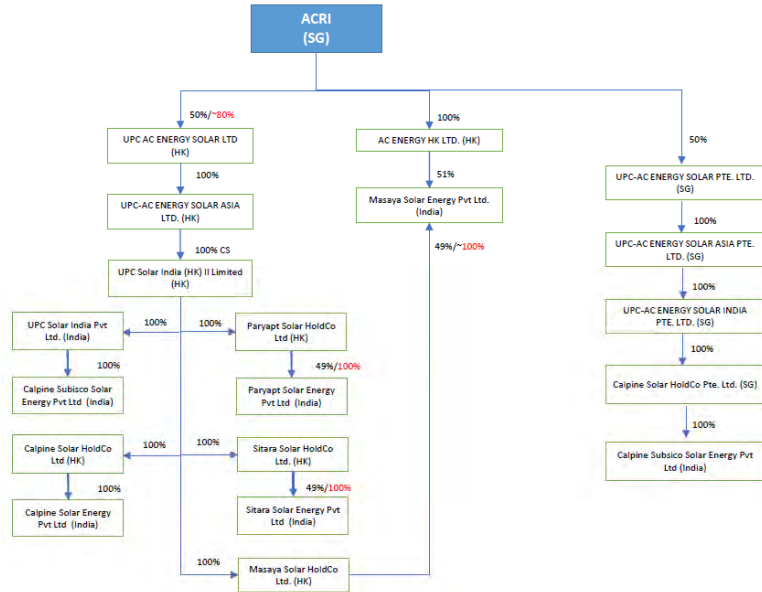
ACRI = AC Renewables International Pte. Ltd.

INTERNATIONAL BUSINESS - AUSTRALIA



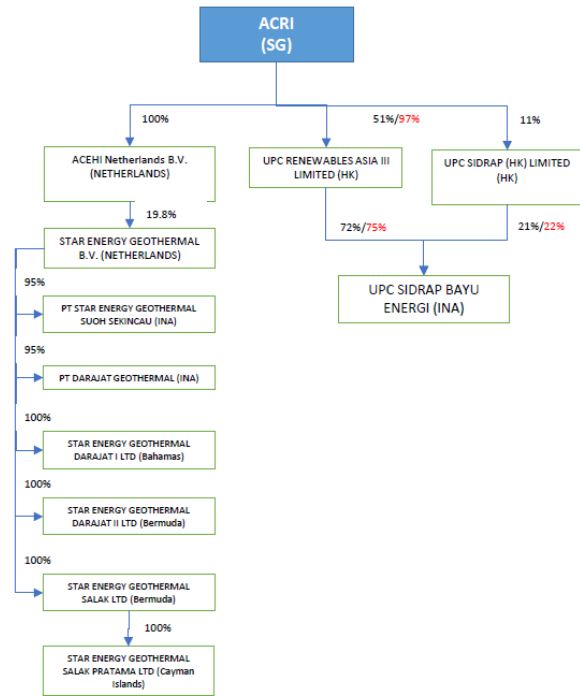
Note:
 (1) For figures in split form (X%/Y%), figures in black font represent voting interest, while figures in red font represent economic interest.
 (2) For figures not in split form, figures in black font represent both voting and economic interest

INTERNATIONAL BUSINESS - INDIA

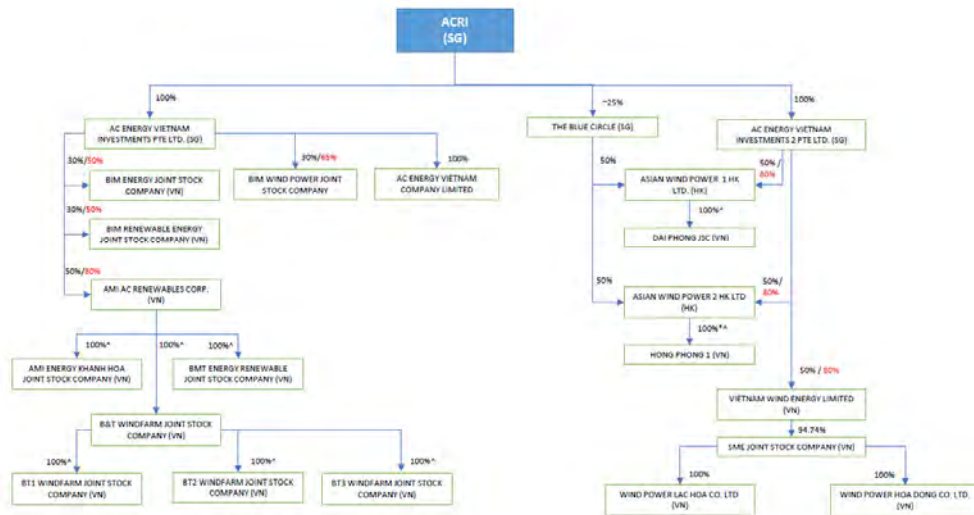


Note:
 (1) For figures in split form (X%/Y%), figures in black font represent voting interest, while figures in red font represent economic interest.
 (2) For figures not in split form, figures in black font represent both voting and economic interest

INTERNATIONAL BUSINESS - INDONESIA



Note:
 (1) For figures in split form (X%/Y%), figures in black font represent voting interest, while figures in red font represent economic interest.
 (2) For figures not in split form, figures in black font represent both voting and economic interest



Note:
 (1) For figures in split form (X%/Y%), figures in black font represent voting interest, while figures in red font represent economic interest.
 (2) For figures not in split form, figures in black font represent both voting and economic interest.

PORTFOLIO OF ASSETS

Overview

The Company operates, manages and is developing a diversified portfolio of assets across multiple jurisdictions. The charts below show the breakdown of the Company’s power project portfolio per country, technology, and status (in terms of Net Attributable Capacity as of 30 June 2021):